

Wireless Network Setup for Windows Clients

Configuration guide to the Sissa-WiFi Wireless Network, using the default tools and drivers of Microsoft Windows XP.

Before you start check the wireless network card driver and update it to the latest version. See the web site of your card's manufacturer.

WPA2 and Windows XP. To use WPA2 with ciphers AES/CCMP you have to install the Service Pack 2 and the following patch from Microsoft: <http://support.microsoft.com/kb/917021>, or the Service Pack 3.

To obtain the latest Windows service pack: if your pc is connected to the Sissa network by cable, visit the internal web site <http://software.sissa.it/pub/windows/updates/> or, if you are not connected, come to the SIS Helpdesk, in room 29 of Main Building, from 9:30 until 11:30 Monday – Friday or from 15:00 until 16:00 Monday – Thursday

SIS provides and maintains the necessary hardware to provide Internet access. Students / visitors are responsible for their own equipment. SIS Helpdesk does not install or service personal computer equipment.

SIS is not responsible or liable for any software obtained through the Helpdesk. SIS does not own or make claim to any of the software presented. Any complaints or problems should be directed to the individual authors or publishers.

Service packs are distributed by Helpdesk as a convenience to student / visitors. We cannot guarantee that they are free of omissions or errors. To ensure a secure system, you will need to follow Microsoft's instructions for updating and maintaining a Windows system. More information can be found at www.microsoft.com.

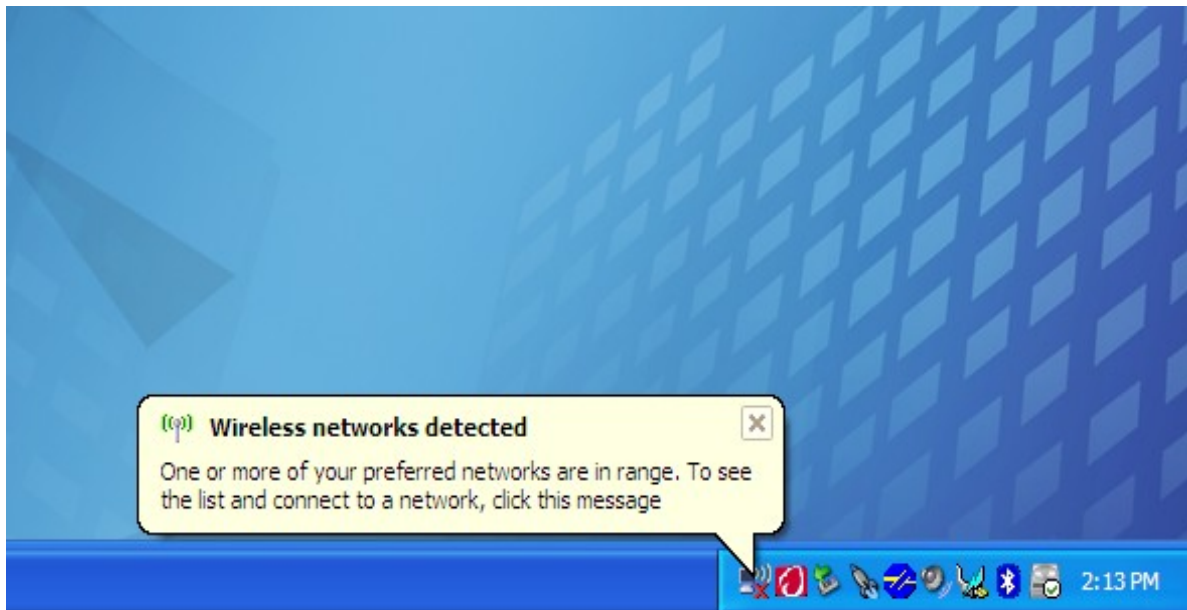
YOU EXPRESSLY UNDERSTAND AND AGREE THAT YOUR USE OF THE SERVICE PACK IS AT YOUR SOLE RISK. THE SERVICE PACK ARE PROVIDED ON AN "AS IS" BASIS AND WITHOUT WARRANTY OF ANY KIND.

THE INSTALLATION OF THE SERVICE PACK OBTAINED THROUGH THE HELPDESK IS DONE AT YOUR OWN DISCRETION AND RISK AND YOU WILL BE SOLELY RESPONSIBLE FOR ANY DAMAGE TO YOUR COMPUTER SYSTEM OR OTHER DEVICE OR LOSS OF DATA THAT RESULTS FROM THE INSTALLATION.

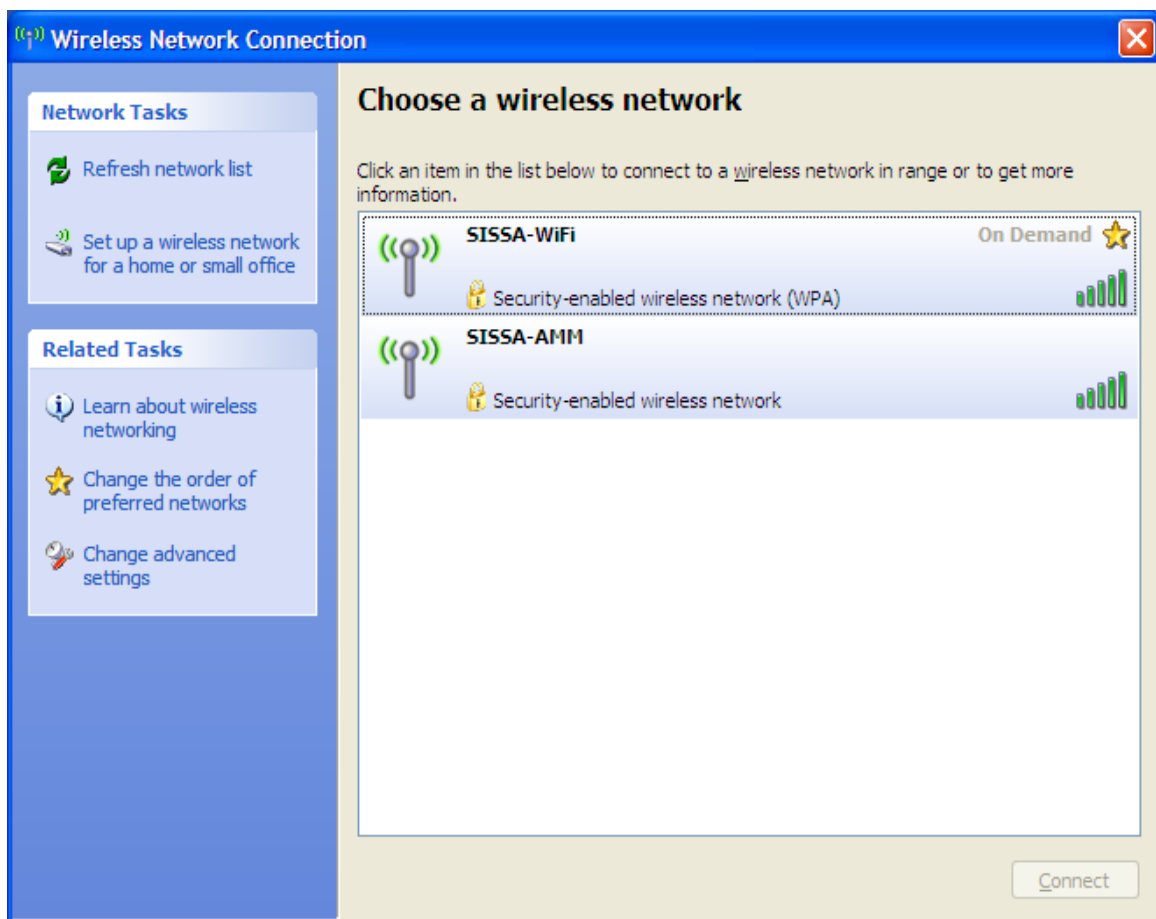
Note: the following tutorial explains how to associate to **SISSA-WiFi** (scientific network: students, faculty and long-term visitors) net.

Important: In order to successfully log into one of the Sissa wireless networks **your password must have been updated after December 31 2007!!**

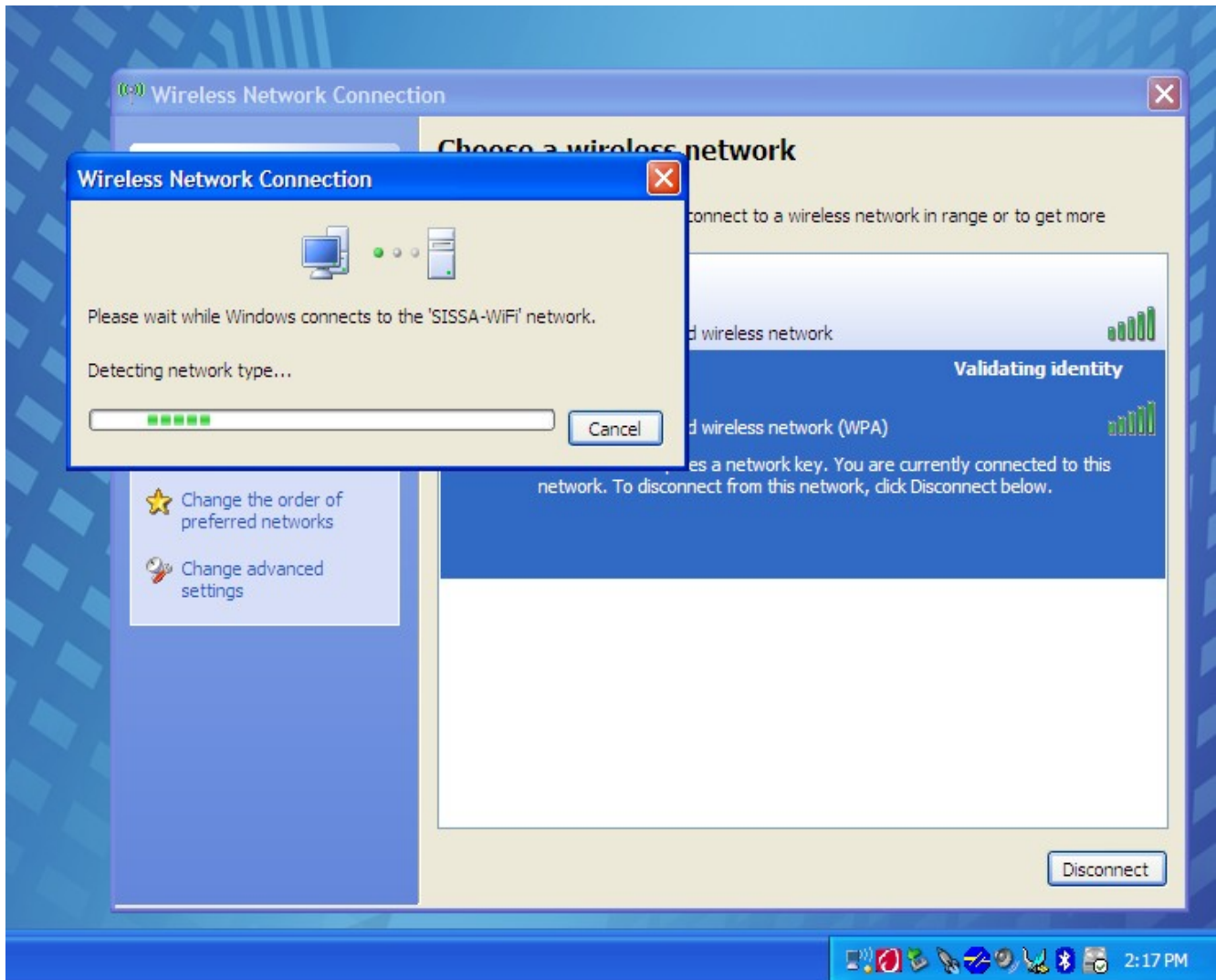
1. If your wireless network card is switched on you should see, in the bottom-right of the screen, an icon signaling the presence of wireless networks.



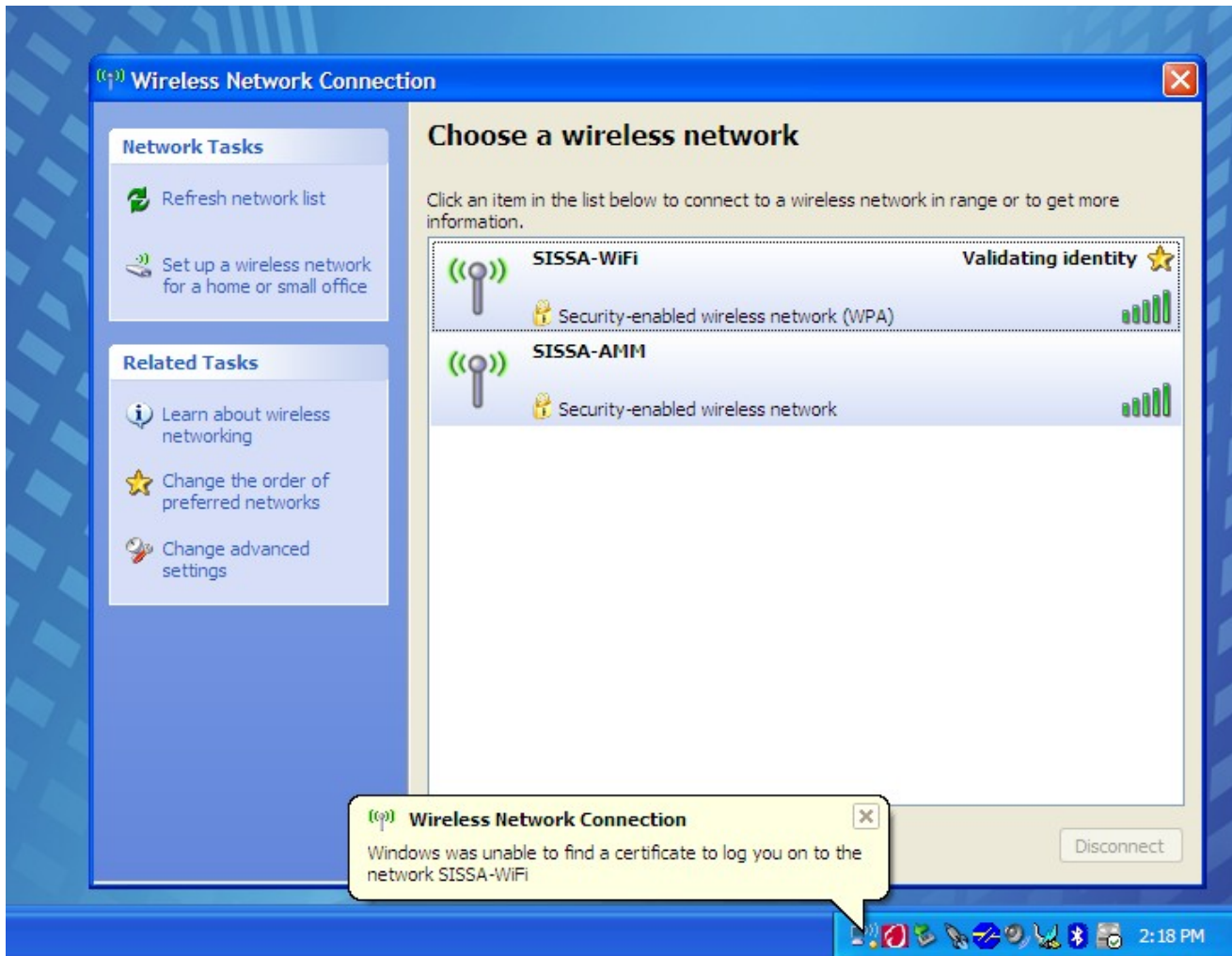
2. Click this icon: the 'Wireless Network Connection' box appears.



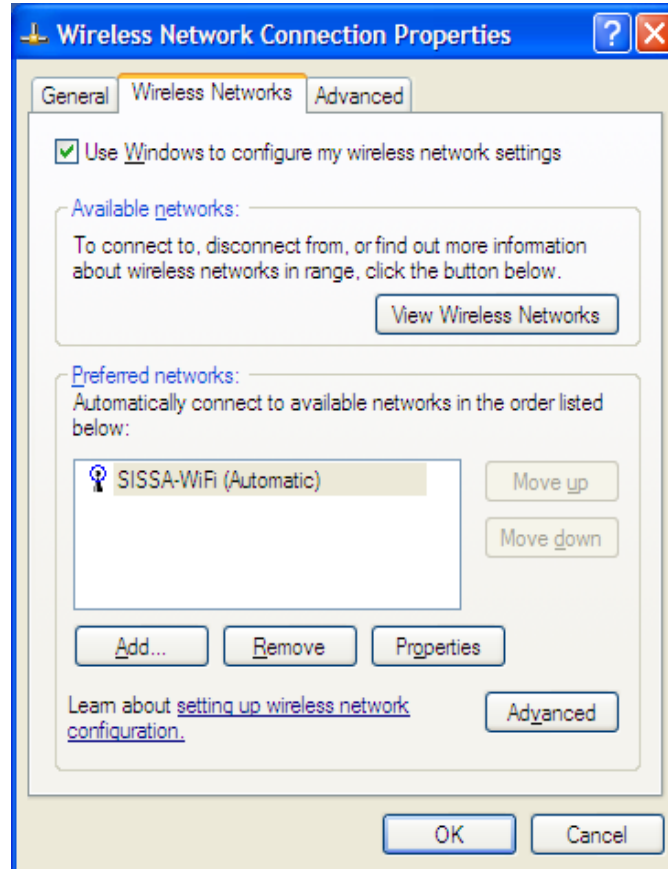
3. Select the network (SSID) to which you want to connect, click 'Connect' button on the bottom-right of you screen.



4. After few seconds, above the wireless network icon, you'll see a box notifying 'Windows was unable to find a certificate to log you on to the SISSA-WiFi'. **This is not an error.** Proceed with 'Change advance settings' on the bottom-left of the 'Wireless Network Connection' box.



5. On the 'Wireless Network Connection Properties' box, click the 'Wireless Network' file card. Now select the 'SISSA-WiFi (Automatic)' entry, and click 'Properties'



6. From the file card 'Association' that should be already filled with WPA/TKIP (WPA2/AES if you are connecting to SISSA-AMM), move to the file card 'Authentication'

The image shows a Windows dialog box titled "SISSA-WiFi properties" with three tabs: "Association", "Authentication", and "Connection". The "Authentication" tab is selected. The "Network name (SSID)" field contains "SISSA-WiFi". Under the "Wireless network key" section, there is a message: "This network requires a key for the following:". Below this, "Network Authentication" is set to "WPA" and "Data encryption" is set to "TKIP". There are empty text boxes for "Network key" and "Confirm network key". The "Key index (advanced)" is set to "1". A checked checkbox indicates "The key is provided for me automatically". An unchecked checkbox at the bottom indicates "This is a computer-to-computer (ad hoc) network; wireless access points are not used". "OK" and "Cancel" buttons are at the bottom right.

SISSA-WiFi properties

Association Authentication Connection

Network name (SSID): SISSA-WiFi

Wireless network key

This network requires a key for the following:

Network Authentication: WPA

Data encryption: TKIP

Network key:

Confirm network key:

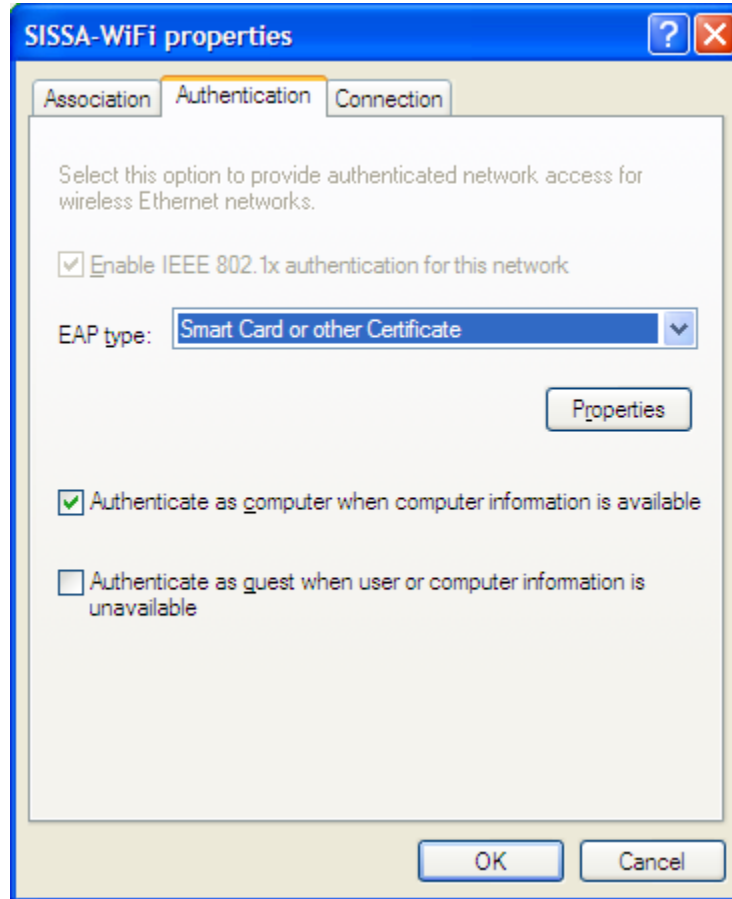
Key index (advanced): 1

The key is provided for me automatically

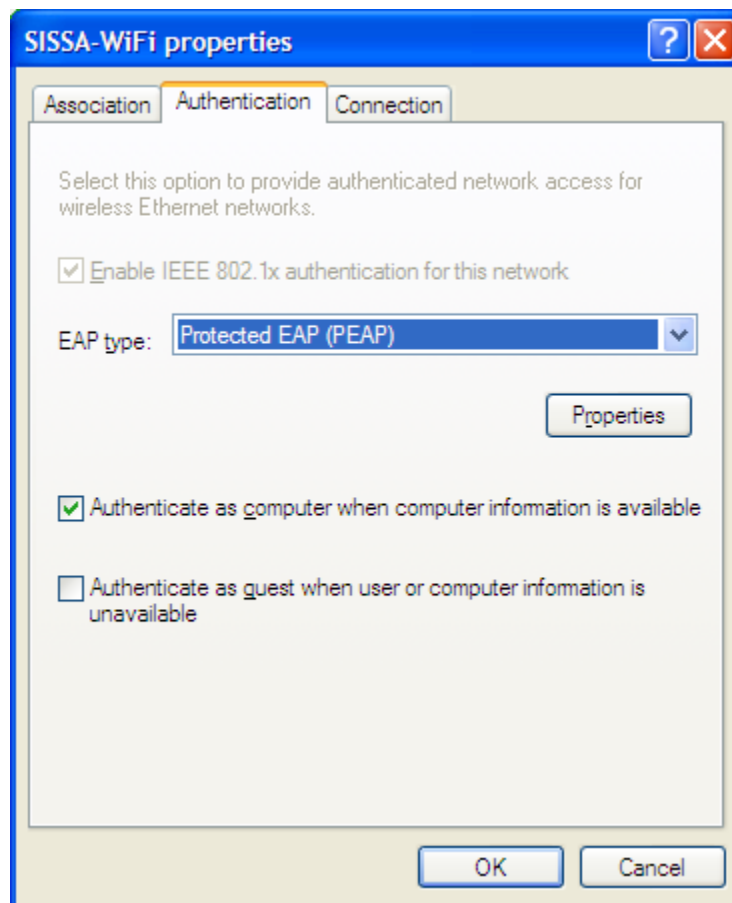
This is a computer-to-computer (ad hoc) network; wireless access points are not used

OK Cancel

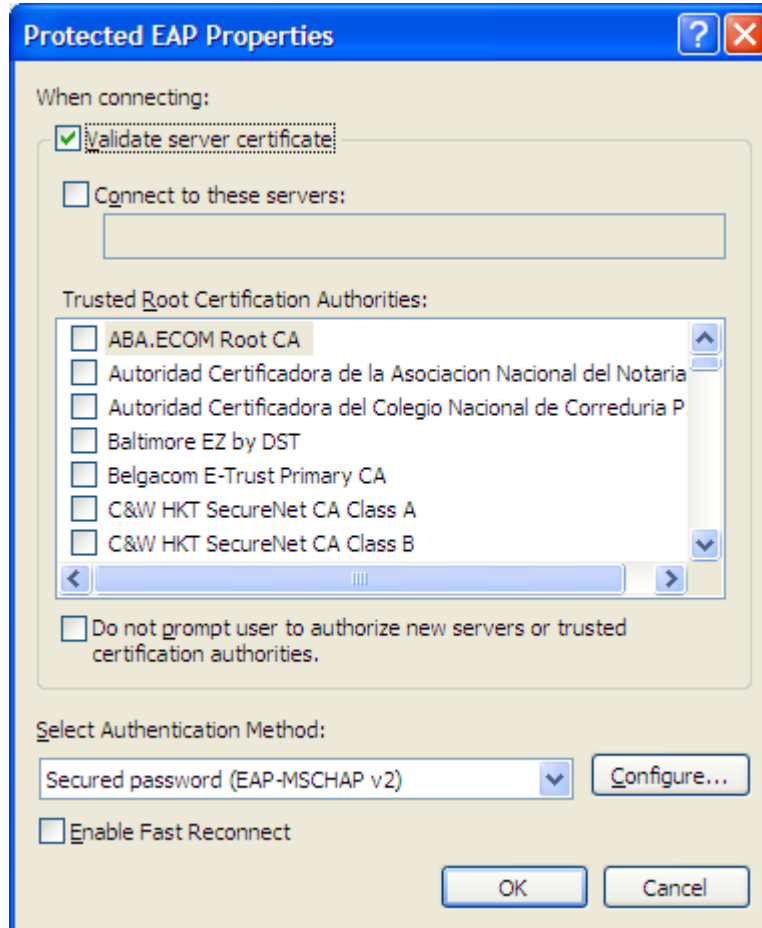
7. In the field 'EAP type' select 'Protected EAP (PEAP)' instead of 'Smart Card or other Certificate'



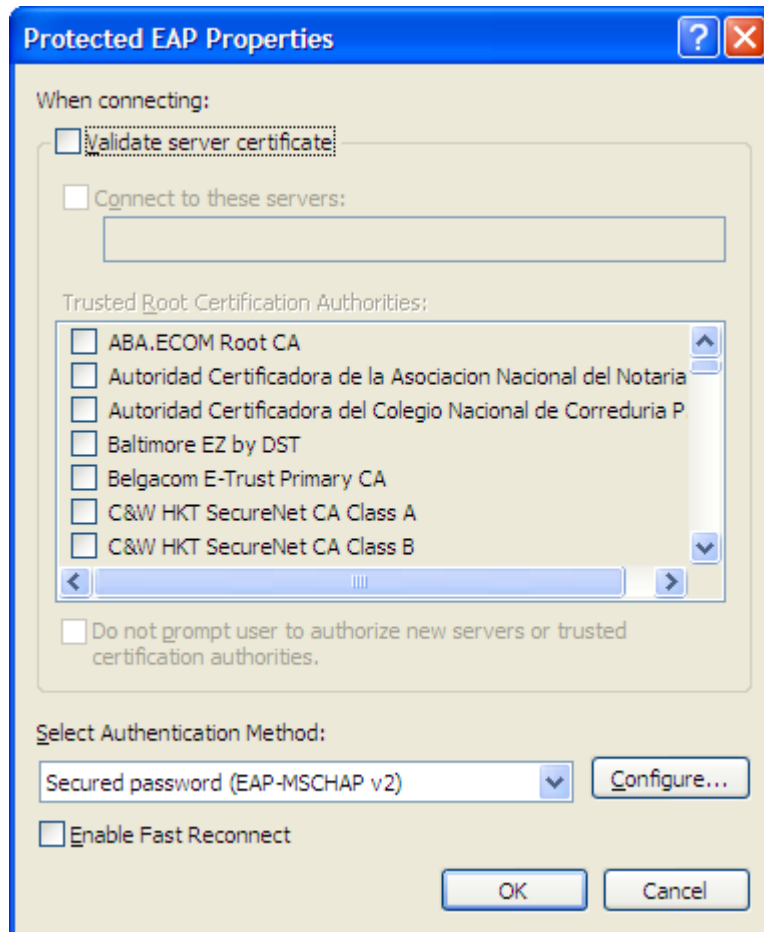
8. Click on the 'Properties' button to configure PEAP



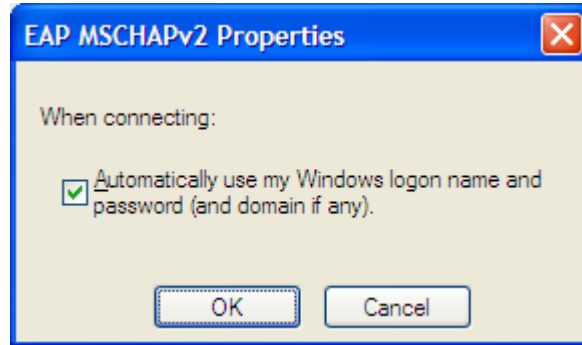
9. Click on 'Validate server certificate' button to remove the selection



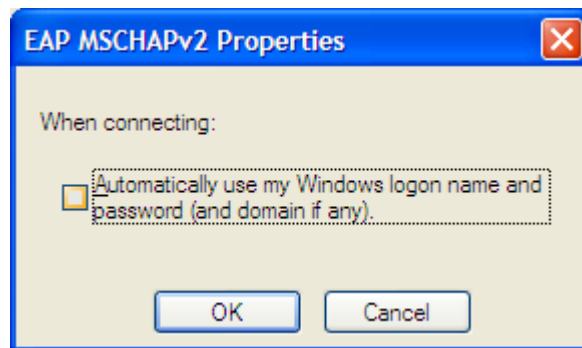
10. Proceed clicking 'Configure' button in the 'Select Authentication Method' area, already filled with 'Secured password (EAP-MSCHAP v2)'



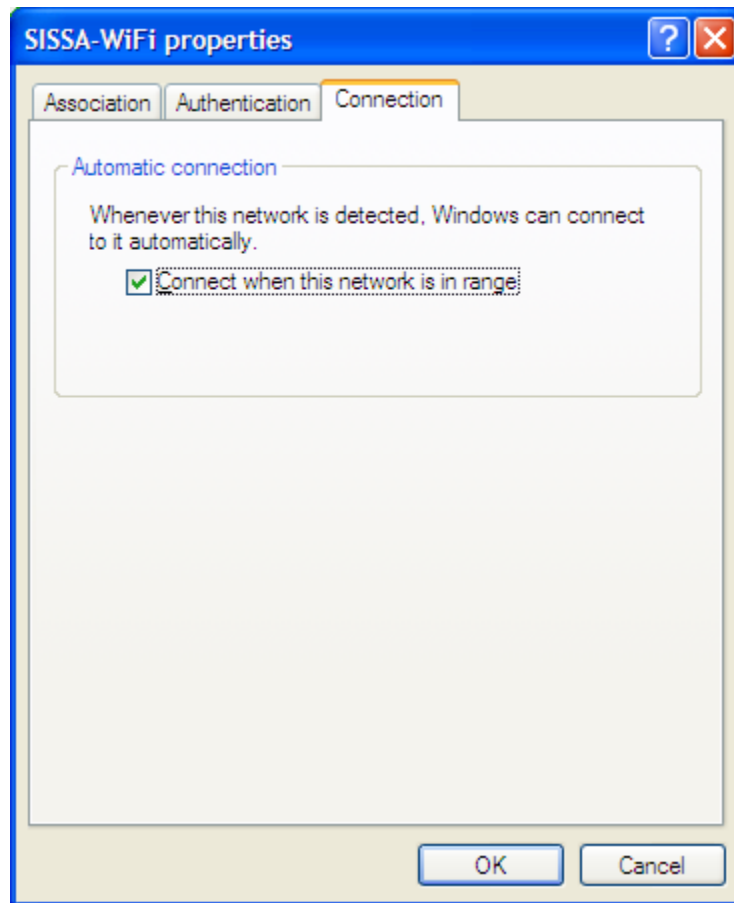
11. Uselect from 'Automatically use my Windows logon name and password (and domain if any)'



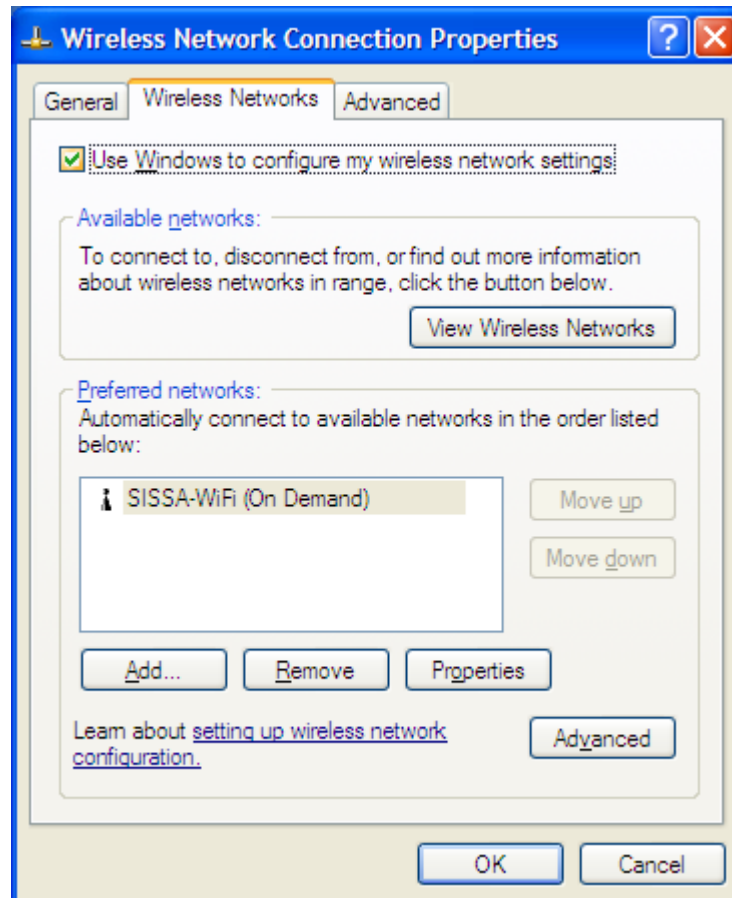
12. Now 'OK' button



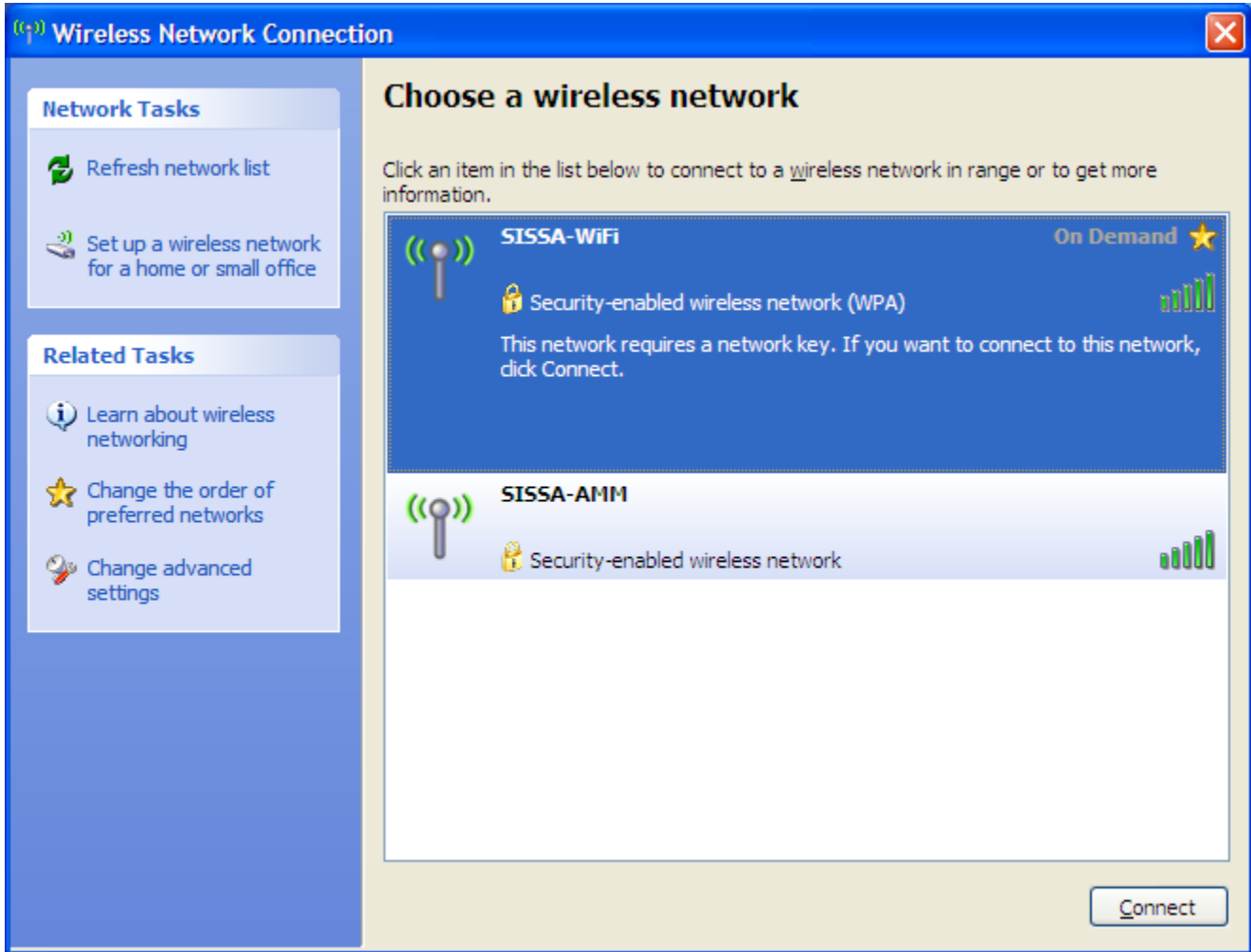
13. Now move on the file card 'Connection' and unselect 'Connect when this network is in range'



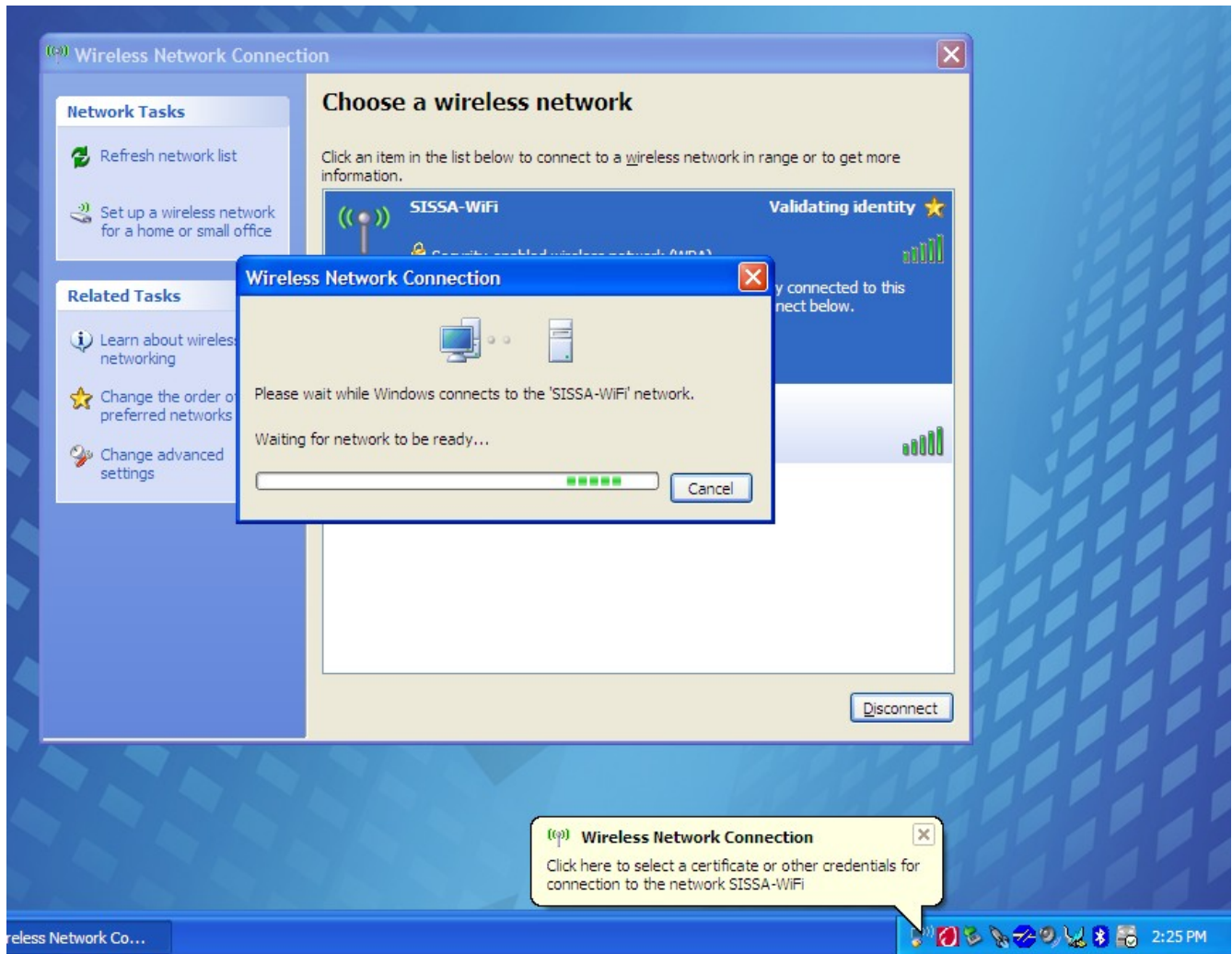
14. Confirm with 'OK'. From the configuration menu you should now see 'Sissa-WiFi (On Demand)' in the 'Wireless Networks' file card. Again 'OK' to confirm and exit.



15. Back in the 'Wireless Network Connection' box. You should see 'SISSA-WiFi' in the list of the available networks, now with 'On Demand' on the right edge. Select it and click 'Connect' button.



16. After few seconds, in the bottom-right, appears the notification window 'Click here to select a certificate or other credentials for connection to the network SISSA-WiFi'. Click on the window to open the 'Enter Credential' box.



17. Insert your username and password (the same you use for webmail, shannon, etc.). but **leave the 'logon domain' field empty.**



Enter Credentials



User name:

Password:

Logon domain:

OK Cancel

18. If the credentials you enter are correct, you should see on the right 'Acquiring network address' and after few seconds 'Connected'. You're in!

